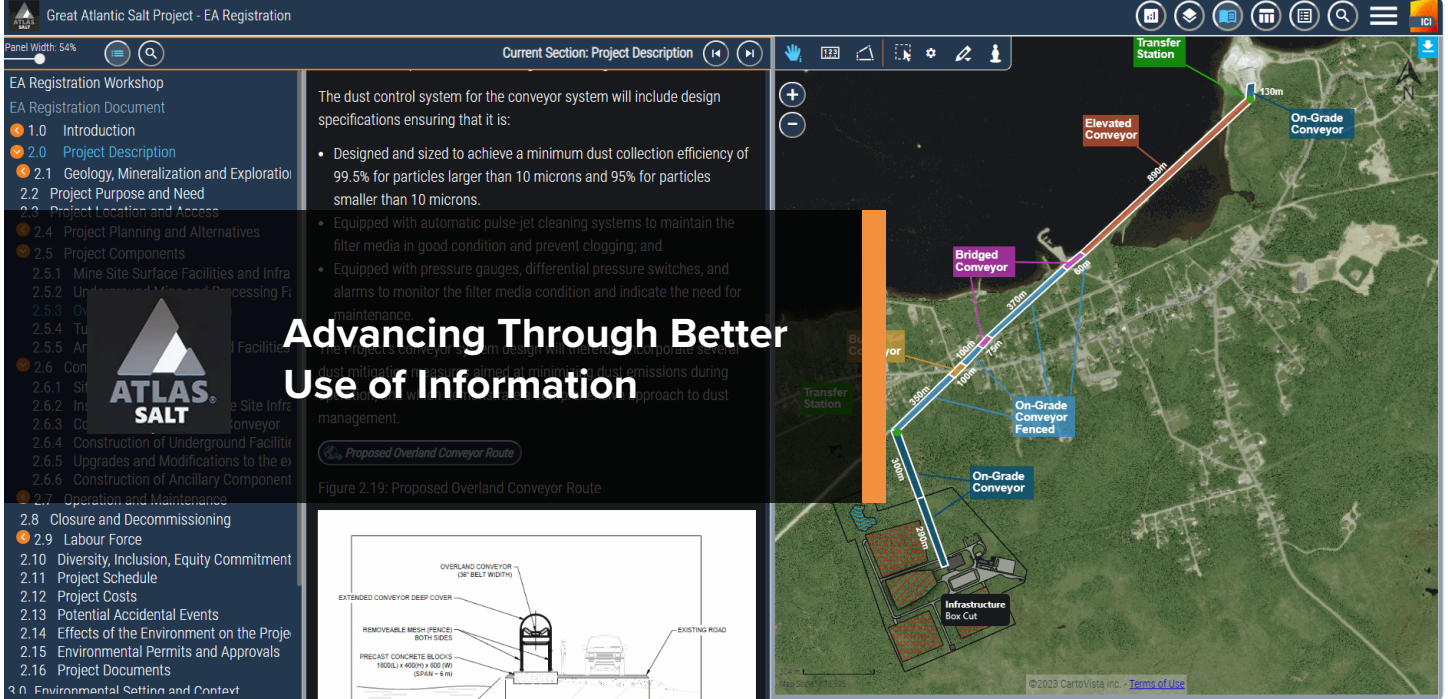




# Case Study: Atlas Salt

GREAT ATLANTIC SALT PROJECT

ICI Innovations Inc.



Atlas Salt is poised to make significant contributions to the North American salt market while upholding its values of environmental stewardship and community engagement.

Atlas Salt’s Great Atlantic deposit, strategically located next to a deep-water port, is expected to become North America’s first new salt mine in nearly three decades. It will be a unique and long-life electric-based operation accessed through inclined ramps vs. vertical shafts that will have negligible GHG emissions.

## The Challenge

Developing a mine in North America involves many challenges including:

- **Environmental Regulations:** Stringent environmental regulations and the need for extensive environmental impact assessments (EIA) can delay or halt projects.
- **Permitting Process:** Obtaining the necessary permits is often a lengthy and complex process involving multiple federal, state, and municipal levels of government.
- **Indigenous Rights:** Many proposed mining areas are on or near Indigenous lands, necessitating negotiations and agreements with Indigenous communities.
- **Infrastructure Requirements:** Remote locations often lack the necessary infrastructure, such as roads, power, and water supply, requiring significant investment.
- **Social License to Operate:** Gaining and maintaining community support is crucial, as public opposition can lead to project delays or cancellations.
- **Technical Challenges:** Geological complexities and the need for advanced technology and expertise to extract resources efficiently and safely can pose significant technical challenges.

Addressing these requires the collection, management, distribution, and communication of vast amounts of information, which is a to many companies, no matter their size. Ensuring this valuable information is properly maintained and utilized through the EIA process and beyond is critical, as is the use of newer technologies to better improve access and understanding of the project so it can successfully overcome each challenge as efficiently as possible.

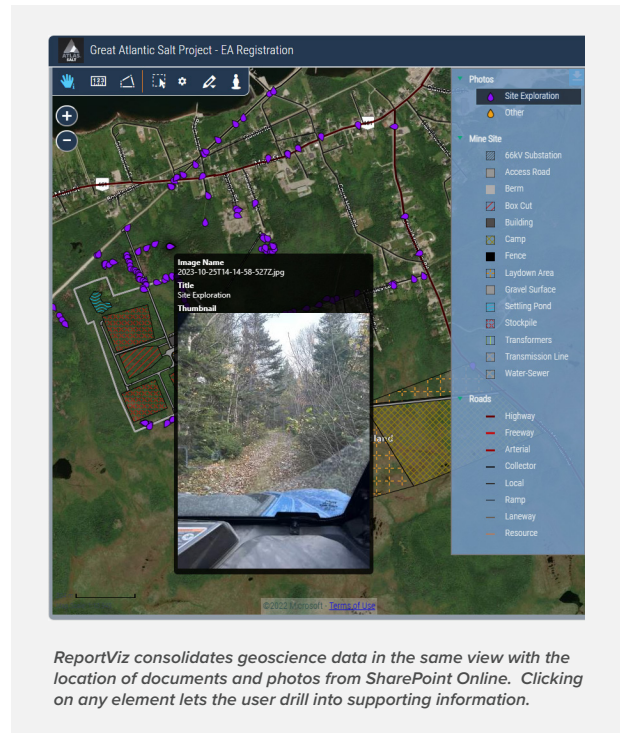
## The Solution

Atlas Salt approached ICI Innovations (ICI) to lead the development of its project description, which is the first step in a Provincial Environmental Assessment (EA) process. ICI and its partner Worley Canada provided experienced EA staff to author the necessary document modules and collect information from several sub-contractors with the additional expertise required to develop an enhanced registration. ICI's Project Information Management System (PIMS) provided the components required to develop and deliver a fully digital registration document.



### Components include:

- **ReportViz** for the creation and display of the report and all referenced data.
- **Engagement Manager** for the collection, management, query and display of all information related to public engagements.
- **Document Manager** for the creation of a document management system to support the easy upload and retrieval of all previously created documents and data associated with the project that would be required by staff to create the registration document.



Microsoft Teams was used to create a collaboration environment for the project as well as the SharePoint Online site, which houses most content. Microsoft SQL Server was also used to manage large and complex datasets that require advanced query options, such as multi-year commercial fishing records, crownland titles and mineral claims.

The client was provided access to the system to improve transparency throughout the process and facilitate discussions throughout the process of describing such a complex project and what is required by the EA framework.

“

*We are grateful for the efficient assessment of the Project by the Newfoundland and Labrador regulators and the NLDECC in particular*

**Rick Labelle**  
CEO, Atlas Salt

”

David Robbins, ICI's lead for the project said at the end of the project, *“I am not sure how I ever managed to get through such projects before without ICI's PIMS solution, as it really allowed the team to quickly identify issues, define the right approach and create the necessary content, including figures. It really changes how we interact with clients, partners, regulators, and the public so that we can respond quickly with the right information and ultimately produce a high-quality result”.*

Following four months of teamwork, Atlas Salt submitted its project registration to the project and the project was released with conditions from the EA process and is now moving onto the engineering and permitting phase of the project. ICI's PIMS continues to provide the necessary tools for this phase as it is designed to adapt to the changing needs of projects.

## Benefits

Atlas Salt and its employees benefit through:

- ***A single, easy-to-access location for all information.*** ReportViz consolidates more than 90 layers of unique data, bringing together everything from geophysicists' reports to well status and production figures. Users can filter and drill down through this data to find exactly what they want using easily understood controls. New data and data sources can be added to the solution with minimal effort.
- ***A quality user interface that enables compelling presentations.*** The solution provides a compelling overview of the GAS project, that lets users read and search the project registration document and all referenced data.
- ***Integration of existing data sets and documents from many sources.*** ICI's PIMS solution facilitates the smooth flow of information from many sources to ensure all documents, data, engagements, and photos are accessible to project staff whenever needed, from any location and when appropriate.

ICI Innovations is  
a digital reporting and data  
visualization software company.

Its ReportViz application as part of its larger Project Information Management System solution provides access to sophisticated reports and data so information for a project can more effectively be managed and communicated.

ReportViz is a complete digital EIA and interactive data visualization solution that is tightly integrated with Microsoft 365's SharePoint Online platform.

ICI Innovations has a solid reputation for providing easy to use, yet powerful solutions that support various natural resource-based industries, including energy.



**ICI Innovations Inc.**

[www.iciinnovations.com](http://www.iciinnovations.com)

(709) 697-2224  
[info@iciinnovations.com](mailto:info@iciinnovations.com)

© 2024 ICI Innovations, all rights reserved. Other marks referenced herein are the service marks, trademarks, or registered trademarks of their respective manufacturers.